



# ASTRA Inc.



Manual Videos



## Electric Peeler KA-851 *Peel-a-ton*

Pineapple peeling machine  
For small-mid size processors

### Original Instructions

#### Contents

1. Introduction .....	P.1
2. Safety Precautions .....	P.1
3. Specifications.....	P.4
4. Names of Parts .....	P.5
5. How to Operate .....	P.8
6. Disassembly and Cleaning .....	P.10
7. Troubleshooting .....	P.11
8. In Conclusion .....	P.11

※Please refer to this manual together with the attached  
"KA-751/720/730 Original Instructions".

#### Remarks

- Thank you very much for purchasing KA-851 .
- To ensure safe and correct operation of this unit, please read and understand the contents of this manual before use.
- After reading this manual, keep it in a safe and accessible place for other users of the unit.
- In order to improve the performance of this product, the specifications of the product may be modified without prior notification.

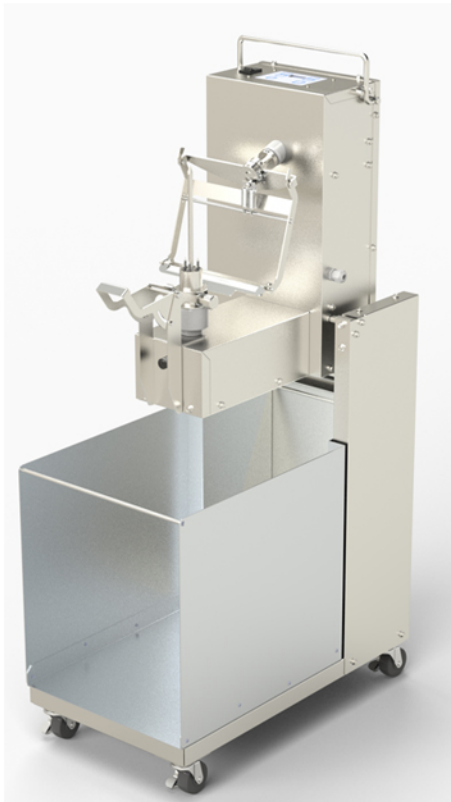
# 1. Introduction

KA-851 (hereinafter referred to as "this machine") is an automatic peeling machine for large fruits/vegetables such as pineapples, which peels them while tilting the main unit. The peeling performance, convenience, and safety have been further improved compared to the previous model KA-751.

This manual is based on the attached "KA-751/720/730 Original Instructions" and summarizes the mechanisms, parts, and handling precautions unique to this machine. Please refer to the attached "KA-751/720/730 Original Instructions" for installation of holding prong, peeler blade, etc.

KA-851

<Upright position>



<Incline position>



## 2. Safety Precautions

- Please read these instructions carefully before operating the peeler, and be sure to operate it correctly.
- Important safety items are set out on the following pages, so be sure and follow them.
- The following expressions are used in this manual:



**Warning!**

This expression indicates a situation in which death or injury may result from improper use of equipment.



**Caution!**

This expression indicates a situation in which injury and/or material damage\* may occur due to improper use of the equipment.

\* Material damage may refer to any or all of the following: house and property, home furnishings, domestic animals and pets.



## **Warning!**

This product cannot be used for any purpose other than peeling fruit.

It is possible to place an object on top of the unit only when the unit is folded (load capacity: 5 kg).

Do not insert your hand into the hinge, latch, stopper, or lower part of the unit.

Install the device on a level surface and fix the casters before use.

If the product is used without being fixed, the main unit may fall, resulting in damage or injury.

Securely connect the hinge part of the main unit to the base and fix it before use.

If the unit is used without being secured, it may fall and be damaged or injured.

When inserting or removing materials, make sure that the main unit is upright and latched before doing so. If a load is applied when the latch is not engaged, it may cause damage or injury.

Do not insert your hand into the dust box while it is in operation, otherwise injury may occur.

The power cable should be connected with enough clearance to prevent excessive force from being applied. Failure to do so may result in disconnection, electric shock, or fire.

When attaching and detaching the holding prong and the peeler, be sure to do so with the main unit in an upright position. It may cause injury, damage, or malfunction if the unit is tilted while attaching and detaching.



## **Caution!**

The weight of this device is 16kg for the main unit, 8kg for the stand, and 24kg in total. When installing, moving, or assembling/disassembling the unit, handle with care so as not to cause shock by dropping, etc.

Please hold the tilt handle firmly when tilting/untilting the main unit. Please make sure that the latch is engaged when the main unit is raised to the Upright position. If you let go of the machine when the latch is not engaged, the machine may fall down vigorously and hit the stopper, deforming the parts or causing the material to fall out, which may affect the peeling.



## Caution!

Do not move the unit while the power is on, or it may malfunction, causing the unit to run unintentionally and damaging the prong and peeler.

It is also possible to operate the unit without tilting it. Regardless of the manual mode or tilt mode setting, pressing the start button will start/stop peeling. The operation in this case is common to KA-751/720/730, so please refer to the attached "KA-751/720/730 Original Instructions".

When the tilt mode is set, the peeling process starts when the main unit is tilted 10 to 15 degrees. When the machine is set to tilt mode, the peeling process starts at an angle of 10 to 15 degrees, and the machine should be tilted all the way down after the peeling process starts.

Do not operate the control panel or power switch with hands that are wet or juiced.

When installing the dust box, be sure to push it all the way in. Do not operate the control panel or power switch with hands that are wet or juiced.

When installing the dust bag, please turn off the power and remove the dust box. The dust bag should not get entangled in the arm, holding prong, or ejector's operating path.

The dust box is made of aluminum alloy and may be deformed if subjected to strong impact.

The capacity of the dust box is approximately equivalent to 10 pineapples.  
Please dispose periodically.

### 3. Specifications

Unit	KA-851
Power	AC100V-240V(50Hz / 60Hz)
Power consumption	250W
External Dimensions	Upright position: Width 320 mm, Depth 580 mm, Height 1,180 mm, Incline position: Height 910 mm *When using low-type base, the height will be -150mm.
Total weight	Main unit 16 kg, Stand 8 kg, Dust box 2 kg
External case material	Stainless steel, aluminum

- Confirm that the following standard attachments have been provided.

To obtain replacement parts, contact your retailer or ASTRA.

No.	Name	Check
1.	Holding prong x 1	
2.	Insertion pin x 2 (for connection of holding prong, one as a spare)	
3.	Slider x 1	
4.	Arm x 1	
5.	Peeler blade x 1	
6.	Spring x 1 (SP-W)	
7.	Spring holder x 1	
8.	Spring holder clip x 1 (CP-S)	
9.	Ejector x 1	
10.	Knurled screw x 2	

- \* The combination and shapes of parts is different depending on the chosen fruit to be peeled.



## 4. Names of Parts

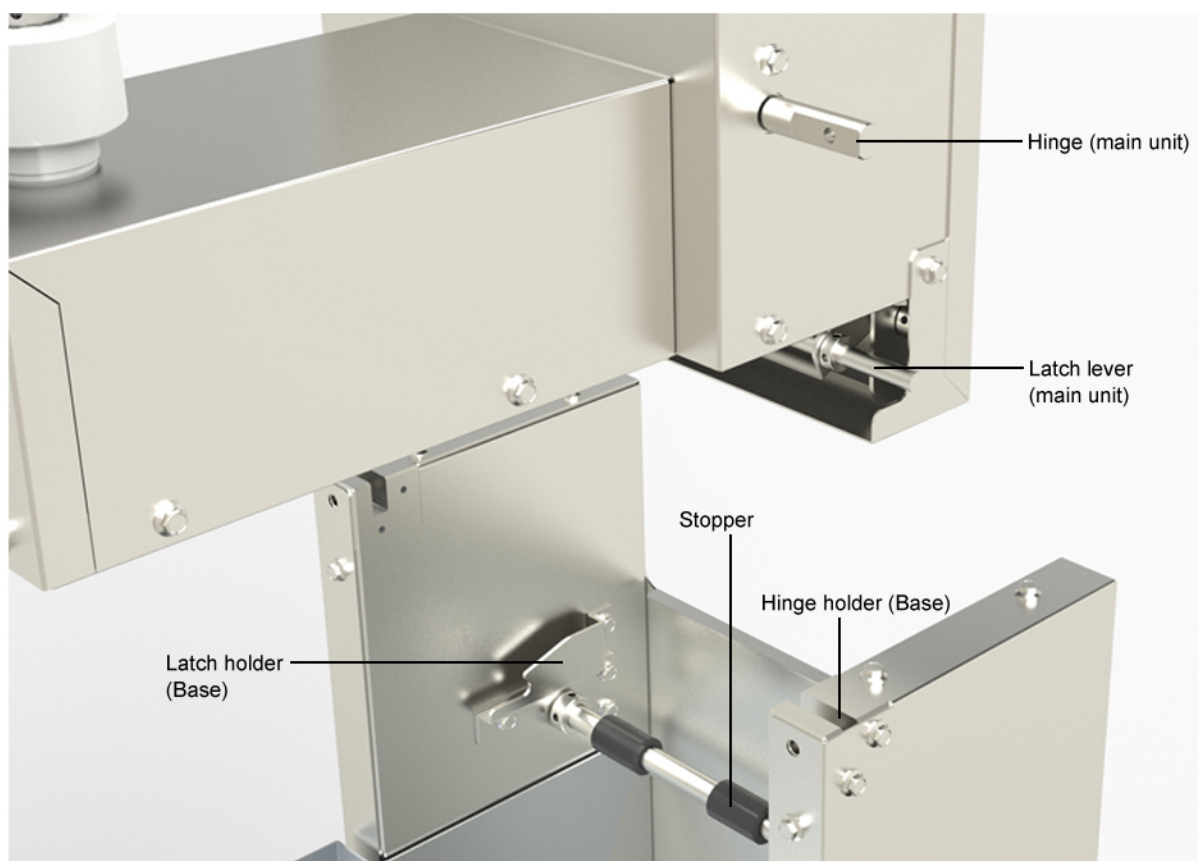
<Main unit>



<Base>

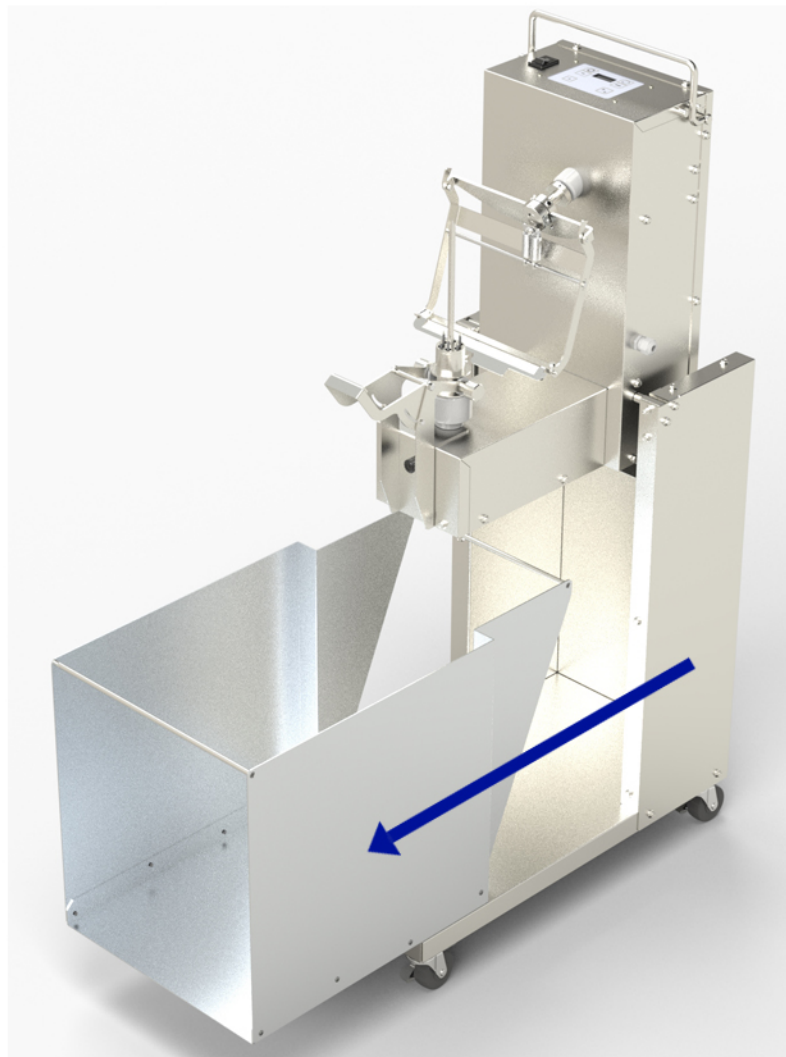


<Connecting part of main unit and stand>



## 1) Preparation before use

- The dust box can be removed by pulling it forward as shown in the figure. Be sure to remove the dust box while the unit is in the upright position. If you touch the tilt handle when removing the dust box, the machine may tilt and you may get injured.
- Please be sure to remove the dust box before putting a garbage bag (recommended size is 70L) on the dust box. Also please be careful not to get the garbage bag entangled on the machine's operating track.
- When the dust box is overfilled, the machine may come into contact with the peeled skin, which may cause unstable operation. Please remove the skin inside the dust box periodically.
- The dust box is an accessory of this equipment and cannot be used by itself.





## 5. How to Operate

### 1 ) Differences from KA-751

The basic structure, operation, and performance of this unit are the same as those of KA-751, but the major difference is that peeling is performed while the main unit is tilted.

You can select "Manual Mode" to start/stop peeling by pressing the start button, or "Tilt Mode" to start peeling automatically by tilting the main unit.

When the unit is first started up, it is in the "Manual Mode". Please switch to the "Tilt Mode" after you become familiar with the operation.

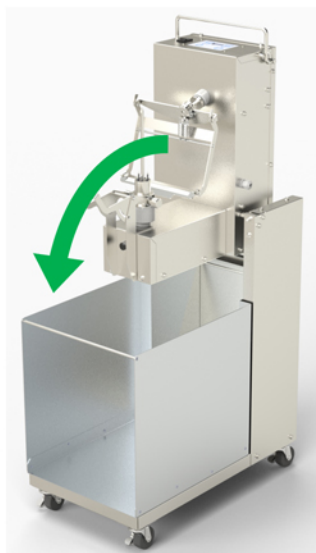
The peeler, arm, holding prong, ejector, dust box, garbage bag and other accessories should be replaced with the power turned off and the main unit in the upright position.

### 2 ) Manual mode

Please refer to the attached "KA-751/720/730 Original Instructions" for how to operate in the manual mode. When you select a fruit, the words "Manual Mode" will appear on the screen. When the manual mode is set, the start button will be lit. In the manual mode, pressing the start button will start / stop peeling regardless of whether the main unit is in the upright position or incline position.

- (1) Set the main unit in the upright position and insert the fruit into the holding prong.
- (2) Grip the tilt handle and tilt the machine forward to release the latch. The speed to tilt the unit should be about two seconds.
- (3) Press the start button to start peeling. The peeled skin and juice will fall into the dust box.
- (4) When the peeling is finished, hold the tilt handle to raise the unit, and release it after confirming that it is latched (fixed).
- (5) Press the ejector to pull out the fruit.

- ※ It is also possible to peel in the upright position without tilting the unit. However, tilting the unit will give you a cleaner peel and reduce the amount of dirt on the unit.
- ※ The dust box fills up after peeling about 10 pineapples. Remove the peeled skin periodically, otherwise they may get entangled in the moving parts.
- ※ Do not run the machine without the material fixed to the machine, otherwise it may cause malfunction.



\*Start button (lit)



### 3 ) Tilt mode

"Tilt Mode" is a mode in which peeling starts automatically when the unit is tilted. After the power is turned on and the fruit is selected, the words "Tilt Mode" will appear on the screen. When the tilt mode is set, the start button will blink.

- (1) Place the main unit in an upright position and insert the material into the holding prong.
- (2) Grip the tilt handle and tilt the unit forward to release the latch.
- (3) Tilt the unit by 10 to 15 degrees, then peeling operation will start automatically.
- (4) After the machine is fixed to the incline position, release the hand.
- (5) When peeling is finished, a "beep-beep" sound will be heard.
- (6) Grip the tilt handle again to raise the main unit and release it after confirming that it is latched.
- (7) Press the ejector to pull out the peeled fruit.

- \* If you want to stop peeling in the middle of peeling, raise the main unit to the upright position or press the start button to stop.
- \* While the tilt mode is set, the next peeling operation cannot be started until the main unit is raised to the upright position after peeling is finished.
- \* The peeling process starts at an angle of 10 to 15 degrees, so moving the machine up and down in this range or keeping the machine in this range may cause unstable operation.
- \* In the tilt mode, pressing the start button will start the peeling operation in the same way as in the manual mode. When operation is started with the start button, there will be no response even if the main unit is tilted or raised during operation.

※Start button  
(blink)



※Peels automatically  
(10~15°tilt)



※Beeps when finished



## 4 ) Mode switching

When the product is shipped, it is set to "Manual mode".

To switch between manual mode and tilt mode, follow the steps below.

- (1) Place the main unit in an upright position.
- (2) The current mode will be displayed on the screen after selecting the fruit. Select the mode with the "→" button, and then press start button to confirm.
- (3) The start button will light up in manual mode, and blink in tilt mode, so check that the mode has been changed to the selected one.

When the unit is in the incline position, it is not possible to switch from manual mode to tilt mode.

## 6. Disassembly and Cleaning

- \* For safety reasons, be sure to turn off the main unit before disassembling and cleaning.
- \* This equipment is waterproof except for the bottom of the main unit.
- \* The Arm, Blade, Holding Prong, Ejector, the entire base, and dust box can be washed in water. After washing, dry thoroughly before use.

## 7. Troubleshooting

Please also refer to the troubleshooting inside the attached "KA-751/720/730 Original Instructions".

Issues, symptoms	Likely Cause	Solution
The latch does not lock.	Is the main unit raised sufficiently until the lower part hits the stopper? If the linkage between the tilt handle and the latch lever on the main broken, the main unit cannot be fixed.	Please contact to ASTRA or your distributor.
The latch does not come off when the tilt handle is down.	If the tilt handle and latch lever do not work together, the unit cannot be fixed.	Please contact to ASTRA or your distributor. The unit can be used in manual mode, upright position only.
The unit does not operate in the tilt mode even though the latch is locked.	The sensor that detects the tilt operation may be faulty.	Please contact to ASTRA or your distributor. The unit can be used in manual mode.
Skin remains, or the position of beginning / end of peeling is not stable.	If the device is tilted vigorously during the peeling operation, the peeler may shake and the processing may be affected.	Please tilt and raise the unit in about 2 seconds.
Peeled skin gets tangled to the ejector.	If the tilting speed is too slow, the peeled skin hangs down and may become entangled to the ejector.	Please tilt and raise the unit in about 2 seconds.
The skin inside the dust box is tangled to the ejector or other part.	Dust box is full.	Remove the dust box and dispose.

## 8. In Conclusion

- If you have further questions, or issues with the unit, please contact Astra for additional consultation.
- Please refer to the attached "KA-751/720/730 Original Instructions" for the warranty and serial number.

Legal manufacturer:  
ASTRA Inc.  
4-1 Hirata Hirano Iizaka-machi Fukushima-shi Fukushima Japan 960-0231